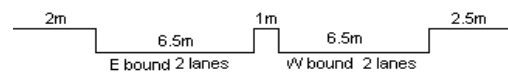
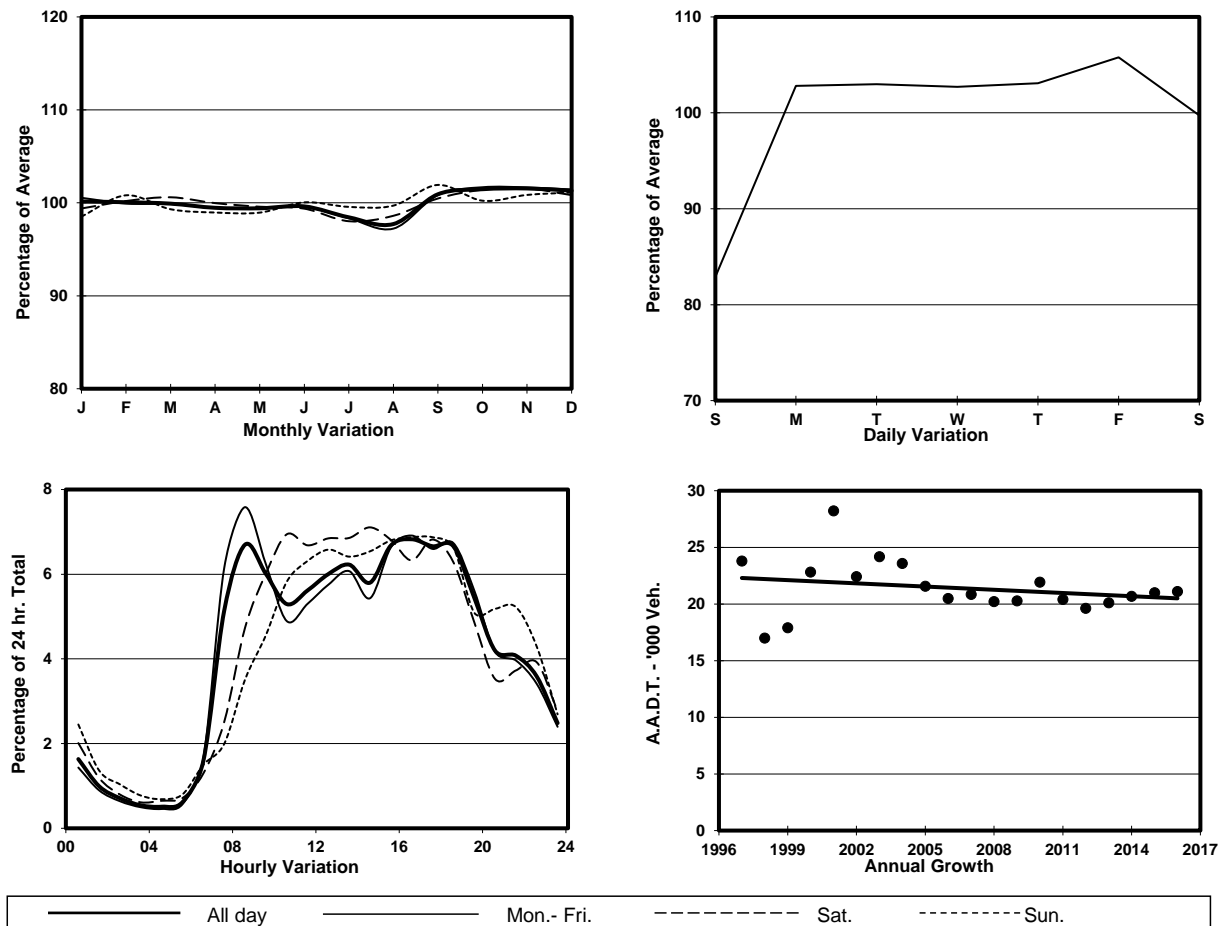


YEAR 2016  
 LINK  
 CORNWALL ST (from WATERLOO RD to NAM  
 CHEONG ST)  
 COVERAGE (B) STATION 4206  
 ROAD NETWORK MAJOR  
 ROAD TYPE DISTRICT DISTRIBUTOR



## 1. TRAFFIC FLOW VARIATION AND GROWTH



## 2. TRAFFIC CHARACTERISTICS (BY DIRECTION)

Parameter	All - Day	Mon. - Fri.	Sat.	Sun.
<b>EAST BOUND</b>				
A.A.D.T.	10690	11130	10820	9060
R 12 / 24 - %	74.4	75.1	74.3	70
R 16 / 24 - %	90.1	90.7	88.9	87.6
AM Peak Hour	0800-0900	0800-0900	0900-1000	0900-1000
One-way flow at AM peak hour	770	890	750	430
T - % (AM)	-	11.8	-	-
PM Peak Hour	1600-1700	1600-1700	1700-1800	1700-1800
One-way flow at PM peak hour	710	760	680	610
T - % (PM)	-	9	-	-
Prop.of commercial vehicles - 16 hr.	-	8.3	-	-
<b>WEST BOUND</b>				
A.A.D.T.	10400	10890	10400	8580
R 12 / 24 - %	72.8	73.4	73.5	67.7
R 16 / 24 - %	91.7	92.2	91.1	89.9
AM Peak Hour	0800-0900	0800-0900	0900-1000	0900-1000
One-way flow at AM peak hour	640	780	530	370
T - % (AM)	-	6.7	-	-
PM Peak Hour	1700-1800	1700-1800	1700-1800	1600-1700
One-way flow at PM peak hour	740	770	760	650
T - % (PM)	-	6.5	-	-
Prop.of commercial vehicles - 16 hr.	-	8	-	-

## 3. OTHER INFORMATION AND COMMENT

**Coverage (B) Station 4206**  
**Year 2016**

**4. Vehicle classification and occupancy - Monday to Friday**

Time		Class of vehicle									
		Motor	Private	Taxi	Private	PLB	Goods veh.		Non	Fr. Bus	
		Cycle	Car		LB		Light	M & H	Fr. Bus	SD	DD
0700-0800	Pro	1.5	44.2	20.4	7.3	0.0	7.7	1.2	15.4	0.1	2.3
	Ocp	1.3	1.8	2.2	8.2	0.0	2.2	1.0	9.6	4.0	43.1
0800-0900	Pro	0.5	71.0	9.9	2.7	0.0	6.6	0.5	6.6	0.1	2.1
	Ocp	1.0	1.4	2.0	4.3	0.0	1.4	1.5	11.1	9.0	40.7
0900-1000	Pro	0.6	63.7	7.7	1.2	0.0	20.1	2.1	2.7	0.0	2.1
	Ocp	1.0	1.4	1.8	1.5	0.0	1.5	2.4	5.8	0.0	29.4
1000-1100	Pro	1.5	50.6	20.7	1.8	0.0	18.8	1.5	2.6	0.0	2.6
	Ocp	1.0	1.6	1.7	2.8	0.0	1.7	2.0	5.9	0.0	24.3
1100-1200	Pro	1.5	52.8	13.5	3.1	0.4	20.8	0.8	4.6	0.0	2.4
	Ocp	1.0	1.5	1.7	1.9	1.0	1.5	2.5	4.6	0.0	26.0
1200-1300	Pro	0.7	59.0	12.0	4.2	0.0	14.8	1.1	6.0	0.0	2.2
	Ocp	1.0	1.6	2.2	8.1	0.0	1.5	1.7	17.5	0.0	30.3
1300-1400	Pro	0.7	49.1	16.6	6.8	0.0	16.9	0.3	7.5	0.0	2.1
	Ocp	1.5	1.5	1.9	6.3	0.0	1.7	1.0	8.2	0.0	33.1
1400-1500	Pro	2.7	48.4	16.8	2.3	0.8	20.2	1.9	5.0	0.0	2.0
	Ocp	1.0	1.5	1.7	2.7	1.5	1.6	1.6	13.0	0.0	37.8
1500-1600	Pro	1.7	54.4	16.6	4.5	0.0	13.0	0.3	7.6	0.0	2.0
	Ocp	1.2	1.5	1.9	7.2	0.0	1.9	2.0	16.7	0.0	32.8
1600-1700	Pro	1.6	50.2	21.0	4.7	0.3	14.7	0.6	4.7	0.0	2.1
	Ocp	1.0	1.4	1.8	4.5	1.0	1.7	2.0	8.6	0.0	28.7
1700-1800	Pro	3.2	57.7	18.8	4.4	0.0	8.8	0.6	4.1	0.0	2.3
	Ocp	1.2	1.4	1.8	9.0	0.0	1.5	1.0	11.3	0.0	44.7
1800-1900	Pro	3.3	64.1	15.3	0.3	0.0	10.0	0.6	4.4	0.0	2.0
	Ocp	1.0	1.4	1.9	1.0	0.0	1.6	1.0	8.8	0.0	50.6
1900-2000	Pro	3.0	69.8	15.4	0.0	0.0	6.6	0.0	3.0	0.0	2.2
	Ocp	1.2	1.4	1.9	0.0	0.0	1.6	0.0	10.3	0.0	52.8
2000-2100	Pro	2.6	58.7	26.0	0.0	0.4	7.2	0.9	1.7	0.0	2.6
	Ocp	1.0	1.5	1.9	0.0	1.0	1.8	2.0	13.0	0.0	37.5
2100-2200	Pro	4.1	59.9	25.9	0.5	0.5	3.6	1.4	1.4	0.0	2.8
	Ocp	1.1	1.4	1.7	3.0	1.0	1.6	2.0	3.0	0.0	31.8
2200-2300	Pro	0.6	67.4	22.7	0.0	0.0	3.7	0.6	1.2	0.0	3.8
	Ocp	2.0	1.5	1.6	0.0	0.0	1.3	1.0	9.5	0.0	29.4
16 hours	Pro	1.9	57.8	16.8	2.8	0.1	12.3	0.9	5.1	0.1	2.3
	Ocp	1.1	1.5	1.9	6.0	1.2	1.6	1.8	10.7	6.5	36.1

**Legend**

**Pro.** Proportion of vehicles in % (Sum may not add up to 100% due to figure rounding)\*

**Ocp.** Average occupancy of vehicles including both driver and passengers\*

**M&H** Medium and Heavy

**\*** All traffic data are collected from combined bounds except for one way traffic